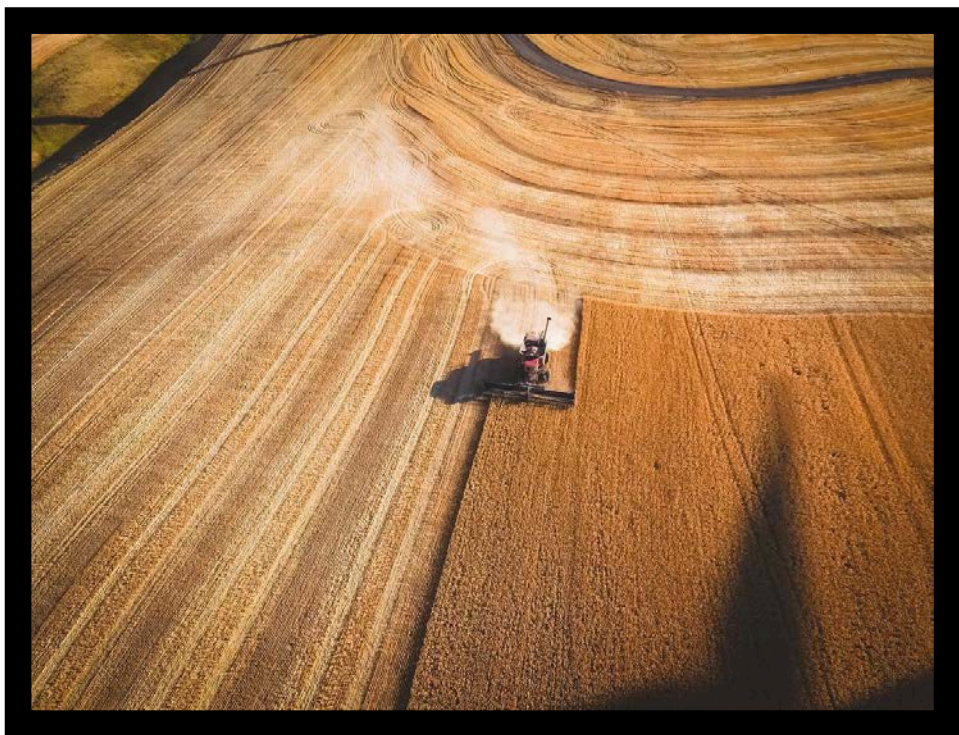


Voluntary Stewardship Program for Columbia County

Individual Stewardship Plan Survey
www.columbiacountyvsp.com



Columbia County, Washington



Introduction

The Voluntary Stewardship Program (VSP) is the result of legislative amendments to the Growth Management Act to establish and develop a non-regulatory approach to Critical Area protection within agricultural lands (RCW 36.70A.725). Its goal is to provide agricultural producers more flexibility than the traditional Critical Area protection measures can offer. The legislative intent is to encourage producers to use the flexibility of VSP, allowing all involved producers to create a plan that works for them and their land—this is a not a “one shoe fits all” approach. The flexibility, individuality, and voluntary design of a VSP ensure success in protecting Critical Areas, while promoting agricultural viability and success.

Instructions

In a combined effort between Columbia County and Columbia Conservation District, we have formatted this Land Use Survey. The VSP Work Group that helped develop the VSP maintained that many of the guidelines are already being met; yet producers would find it beneficial to develop an Individual Stewardship Plan (ISP) as provided in this program. The ISP will greatly help in securing the resources needed to fully implement the VSP. The information contained within the ISP is held as confidential through the Columbia Conservation District.

Thank you for your interest in the VSP. Your involvement will allow us to work together to promote your Agricultural Viability and protect our County-Wide Critical Areas. *Please submit this survey to the Department of Planning and Building (address and contact information on the back).*

Thank you,

Columbia County
Columbia Conservation District

Current Land Use

1. Do you currently farm or raise animals within Columbia County?

Yes

No (If selected, please discontinue survey)

2. How many acres of land do you own/lease and actively farm or ranch on? (Choose one)

0-50 acres

50-100 acres

101-1,000 acres

1,001 + acres

Prefer not to answer

3. What crops are you currently growing, or have you previously (between 2011—now) grown on your land? Choose all that apply.

Barley

Beans

Spring Peas

Oilseed Crops

Lentils

N/A

Spring Wheat

Other: Please Explain

Winter Wheat

Alfalfa/Hay

4. What livestock do you currently, or have you previously (between 2011—now) raised on your land? Choose all that apply.

Dairy Cattle

N/A

Beef Cattle

Other: Please Explain

Goats

Chickens

5. How many years have you been farming or ranching this land? (Please write in a numerical value)

Intentionally left blank, please continue to the next page.

Your Crop Practices (If you do not farm your land, proceed to the next section)

6. Do you participate in any Conservation Cover practices? (Definition—establishing and maintaining long-term, permanent vegetative cover)

Yes, I do:

No, I do not:

Implemented before
07/2011

I am interested in
learning more

Implemented after
07/2011

I am not interested in
learning more

7. Do you participate in Integrated Pest Management practices? (Definition—a site-specific combination of pest prevention, pest avoidance, pest monitoring, and pest suppression strategies)

Yes, I do:

No, I do not:

Implemented before
07/2011

I am interested in
learning more

Implemented after
07/2011

I am not interested in
learning more

8. Do you participate in any Cover Crop practices?
(Definition—grasses, legumes, and leafy ground cover plants for seasonal vegetative cover)

Yes, I do:

No, I do not:

Implemented before
07/2011

I am interested in
learning more

Implemented after
07/2011

I am not interested in
learning more

9. Do you participate in having a Riparian Forest Buffer?
(Definition—an area predominantly of suitable trees and/or shrubs planted along a stream, river, lake, or other water body)

Yes, I do:

No, I do not:

Implemented before
07/2011

I am interested in
learning more

Implemented after
07/2011

I am not interested in
learning more

10. Do you participate in Residue and Tillage Management/Reduced Till? (Definition—managing the amount, orientation, and distribution of crop and other plant residue on the soil surface year-round)

Yes, I do:

No, I do not:

Implemented before
07/2011

I am interested in
learning more

Implemented after
07/2011

I am not interested in
learning more

11. Do you participate in Nutrient Management? (Definition—managing the amount, source, placement, and timing of plant nutrients and soil amendments)

Yes, I do:

No, I do not:

Implemented before
07/2011

I am interested in
learning more

Implemented after
07/2011

I am not interested in
learning more

12. Do you participate in Fencing? (Definition—a constructed barrier to protect animals or people)

Yes, I do:

No, I do not:

Implemented before
07/2011

I am interested in
learning more

Implemented after
07/2011

I am not interested in
learning more

Intentionally left blank, please continue to the next page.

Your Livestock Practices (If you do not ranch your land, proceed to the next section)

13. Do you participate in having a Riparian Forest Buffer?
(Definition—an area predominantly of suitable trees and/or shrubs planted along a stream, river, lake, or other water body)

Yes, I do:

No, I do not:

Implemented before

I am interested in

07/2011

learning more

Implemented after

I am not interested in

07/2011

learning more

14. Do you participate in Fencing? (Definition—a constructed barrier to protect animals or people)

Yes, I do:

No, I do not:

Implemented before

I am interested in

07/2011

learning more

Implemented after

I am not interested in

07/2011

learning more

15. Do you participate in Stream Habitat Improvement and Management? (Definition—maintain, improve, or restore physical, chemical and biological functions of a stream and its associated riparian zone)

Yes, I do:

No, I do not:

Implemented before
07/2011

I am interested in
learning more

Implemented after
07/2011

I am not interested in
learning more

16. Do you participate in Livestock Grazing? (Definition—managing the harvest of vegetation with grazing and/or browsing animals and soil amendments)

Yes, I do:

No, I do not:

Implemented before
07/2011

I am interested in
learning more

Implemented after
07/2011

I am not interested in
learning more

17. Do you participate in having a Watering Facility?
(Definition—a means of providing a controlled water source to livestock or wildlife)

Yes, I do:

No, I do not:

Implemented before
07/2011

I am interested in
learning more

Implemented after
07/2011

I am not interested in
learning more

Intentionally left blank, please continue to the next page.

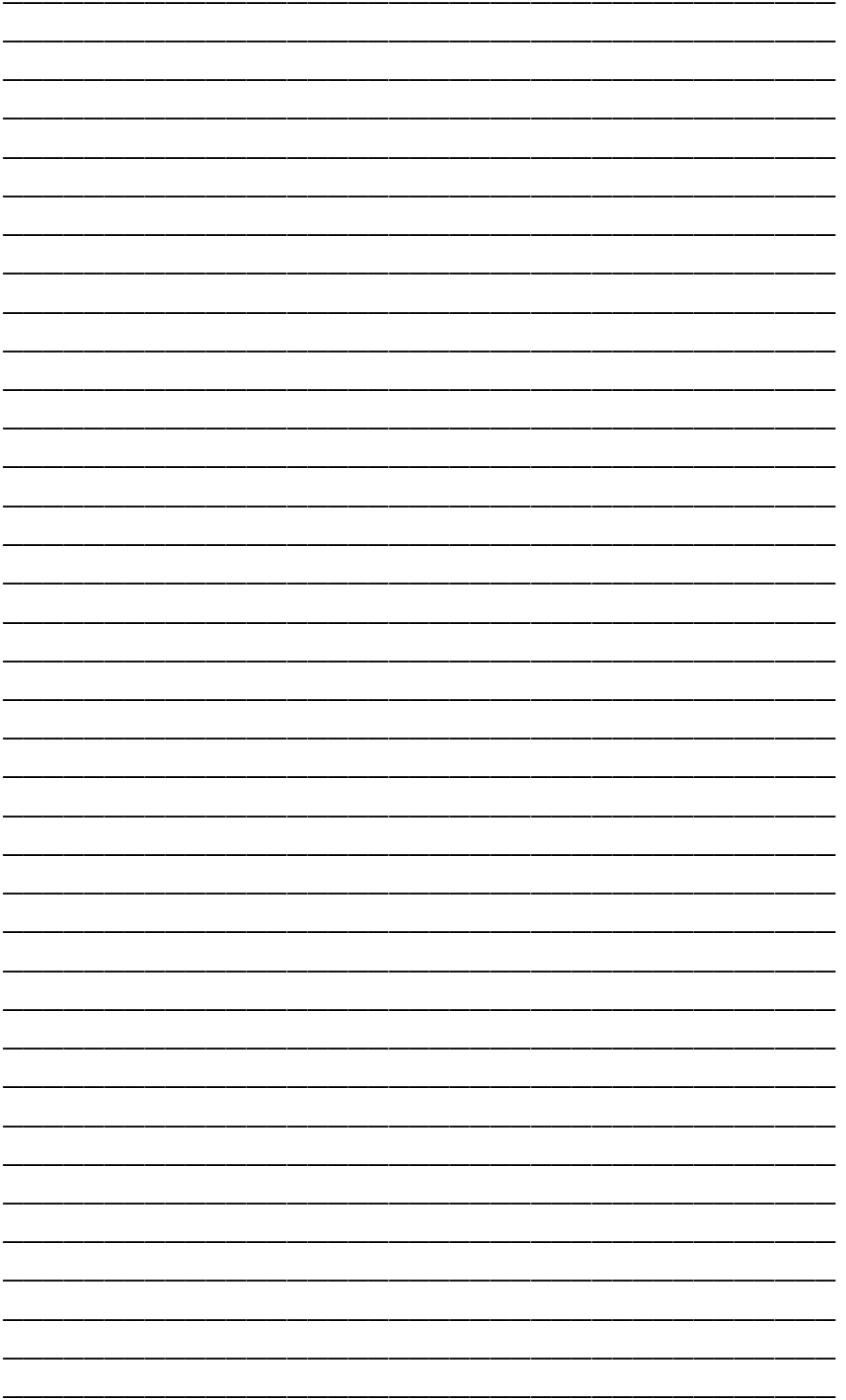
21. For the Conservation Practices you currently participate in, what are your funding sources?

- Federal Funding Sources
- State Funding Sources
- Private Funding Sources
- Mixed Funding Sources

22. What WRIA is your land located within? *Check all that apply.*

- Tucannon—WRIA 35
- Touchet—WRIA 32
- Lower Snake—WRIA 33
- Unsure; may require technical assistance in identifying

23. Through this survey, what would you like to gain? Are you interested in learning about funding options, available technical assistance, or other Conservation Practices available to you? *Please be as detailed as possible. Use the following space to answer the question.*



Contact Information

Please complete the following page with requested contact information. Once your survey is processed, County and Conservation District staff will review your responses and contact you as follow up. From this survey, an ISP can be developed for you at your discretion.

Name:

Mailing Address:

Phone Number:

Email Address:

Location of Farmed/Ranched Lands:

Thank you for taking the time to complete this survey, the first step in identifying and documenting the resource management efforts being applied by our local producers.

While we review this information, we may reach out with additional questions regarding your submittal. Once we have completed review, we will follow up with you to discuss your interest in pursuing the development of an ISP for your operation.

If you would like to schedule an on-site inspection for any technical assistance (Critical Area identification, WRIA identification, etc.) please contact us below.

**Columbia County Planning and Building
114 South 2nd Street, Dayton, WA 99328
Meagan Bailey
Planning Director
509-382-4676
Meagan_bailey@co.columbia.wa.us**

**Columbia Conservation District
202 South 2nd Street, Dayton, WA 99328
Terry Bruegman
District Manager
509-382-4273
Tb-ccd@daytonwa.net**

This survey and the Voluntary Stewardship Program have been endorsed by the Work Group Committee, made up of local farmers, ranchers, and public officials. For more information, please contact us or visit www.columbiacountyvsp.com.