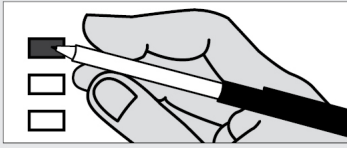


Instructions

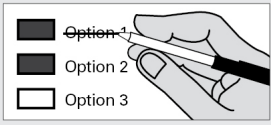
How to vote



Use a dark blue or black ink pen to completely fill in the box to the left of your choice.

Vote for one in each race. If you vote for more than one, no votes will be counted for that race.

If you make a mistake



Draw a line through the entire measure response or candidate's name.

Then you may make another choice.

Optional write-in



To vote for a candidate not listed for that race, fill in the box to the left of the dashed line and print the name of the candidate.



Who donates to campaigns?

View contributors for candidates and measures

Public Disclosure Commission

www.pdc.wa.gov
Toll Free (877) 601-2828

READ: Each candidate for partisan office may state a political party that he or she prefers. A candidate's preference does not imply that the candidate is nominated or endorsed by the party, or that the party approves of or associates with that candidate.

Federal Partisan Office

**U.S. Representative
5th Congressional District**

Vote for one

- Chris Armitage
(Prefers Democratic Party)
- Brendan O'Regan
(Prefers Independent Party)
- Stephen T. Major
(Prefers Republican Party)
- Dave Wilson
(Prefers Democratic Party)
- Cathy McMorris Rodgers
(Prefers Republican Party)
- _____

State Partisan Office

Governor - Vote for one

- Alex Tsimerman
(Prefers StandupAmerica Party)
- Phil Fortunato
(Prefers Republican Party)
- Ryan Ryals
(Prefers Unaffiliated Party)
- Leon Aaron Lawson
(Prefers Trump Republican Party)
- Henry Clay Dennison
(Prefers Socialist Workers Party)
- Tim Eyman
(Prefers Republican Party)
- Liz Hallock
(Prefers Green Party)
- Goodspaceguy
(Prefers Trump Republican Party)
- Omari Tahir Garrett
(Prefers Democratic Party)
- Don L. Rivers
(Prefers Democratic Party)
- Martin L. 'Iceman' Wheeler
(Prefers Republican Party)
- Raul Garcia
(Prefers Republican Party)
- Tylor Grow
(Prefers Republican Party)
- Winston Wilkes
(Prefers Propertarianist Party)
- Brian R. Weed
(States No Party Preference)
- Thor Amundson
(Prefers Independent Party)
- Gene Hart
(Prefers Democratic Party)
- William (Bill) Miller
(Prefers American Patriot Party)
- Matthew Murray
(Prefers Republican Party)
- Dylan B. Nails
(Prefers Independent Party)
- Cameron M. Vessey
(States No Party Preference)
- David W. Blomstrom
(Prefers Fifth Republic Party)
- Anton Sakharov
(Prefers Trump Republican Party)
- Craig Campbell
(States No Party Preference)
- Nate Herzog
(Prefers Pre2016 Republican Party)
- Cregan M. Newhouse
(States No Party Preference)
- Ian Gonzales
(Prefers Republican Party)
- Cairo D'Almeida
(Prefers Democratic Party)
- Elaina J. Gonzalez
(Prefers Independent Party)
- Jay Inslee
(Prefers Democratic Party)
- Joshua Freed
(Prefers Republican Party)
- David Voltz
(Prefers Cascadia Labour Party)
- Joshua Wolf
(Prefers New-Liberty Party)
- Loren Culp
(Prefers Republican Party)
- Richard L. Carpenter
(Prefers Republican Party)
- Bill Hirt
(Prefers Republican Party)
- _____

32761

State Partisan Office	
Lt. Governor	
Vote for one	
<input type="checkbox"/>	Joseph Brumbles (Prefers Republican Party)
<input type="checkbox"/>	Jared Frerichs (Prefers Libertarian Party)
<input type="checkbox"/>	Ann Davison Sattler (Prefers Republican Party)
<input type="checkbox"/>	James R. Rafferty (Prefers Democratic Party)
<input type="checkbox"/>	Marko Liias (Prefers Democratic Party)
<input type="checkbox"/>	Matt Seymour (Prefers Libertarian Party)
<input type="checkbox"/>	Michelle Jasmer (Prefers Democratic Party)
<input type="checkbox"/>	Bill Penor (Prefers Republican Party)
<input type="checkbox"/>	Richard (Dick) Muri (Prefers Republican Party)
<input type="checkbox"/>	Denny Heck (Prefers Democratic Party)
<input type="checkbox"/>	Marty McClendon (Prefers Republican Party)
<input type="checkbox"/>	
Secretary of State	
Vote for one	
<input type="checkbox"/>	Ed Minger (Prefers Independent Party)
<input type="checkbox"/>	Gentry Lange (Prefers Progressive Party)
<input type="checkbox"/>	Kim Wyman (Prefers Republican Party)
<input type="checkbox"/>	Gael Tarleton (Prefers Democratic Party)
<input type="checkbox"/>	
State Treasurer	
Vote for one	
<input type="checkbox"/>	Duane A. Davidson (Prefers Republican Party)
<input type="checkbox"/>	Mike Pellicciotti (Prefers Democratic Party)
<input type="checkbox"/>	
State Auditor	
Vote for one	
<input type="checkbox"/>	Joshua Casey (Prefers Democratic Party)
<input type="checkbox"/>	Chris Leyba (Prefers Republican Party)
<input type="checkbox"/>	Pat (Patrice) McCarthy (Prefers Democratic Party)
<input type="checkbox"/>	

State Partisan Office	
Attorney General	
Vote for one	
<input type="checkbox"/>	Matt Larkin (Prefers Republican Party)
<input type="checkbox"/>	Mike Vaska (Prefers GOP Party)
<input type="checkbox"/>	Brett Rogers (Prefers Republican Party)
<input type="checkbox"/>	Bob Ferguson (Prefers Democratic Party)
<input type="checkbox"/>	
Commissioner of Public Lands	
Vote for one	
<input type="checkbox"/>	Cameron Whitney (Prefers Republican Party)
<input type="checkbox"/>	Steve Sharon (Prefers Republican Party)
<input type="checkbox"/>	Hilary Franz (Prefers Democratic Party)
<input type="checkbox"/>	Kelsey Reyes (Prefers Libertarian Party)
<input type="checkbox"/>	Maryam Abasbarzy (Prefers Republican Party)
<input type="checkbox"/>	Sue Kuehl Pederson (Prefers Republican Party)
<input type="checkbox"/>	Frank Wallbrown (Prefers Democratic Party)
<input type="checkbox"/>	
State Nonpartisan Office	
Superintendent of Public Instruction	
Vote for one	
<input type="checkbox"/>	Ron Higgins
<input type="checkbox"/>	Maia Espinoza
<input type="checkbox"/>	Stan Lippmann
<input type="checkbox"/>	David Spring
<input type="checkbox"/>	Dennis Wick
<input type="checkbox"/>	Chris Reykdal
<input type="checkbox"/>	
State Partisan Office	
Insurance Commissioner	
Vote for one	
<input type="checkbox"/>	Anthony Welti (Prefers Libertarian Party)
<input type="checkbox"/>	Chirayu Avinash Patel (Prefers Republican Party)
<input type="checkbox"/>	Mike Kreidler (Prefers Democratic Party)
<input type="checkbox"/>	

State Partisan Office	
State Senator Legislative District No. 16	
Vote for one	
<input type="checkbox"/>	Perry Dozier (Prefers Republican Party)
<input type="checkbox"/>	Danielle Garbe Reser (Prefers Democratic Party)
<input type="checkbox"/>	William "Bill" Jenkin (Prefers Republican Party)
<input type="checkbox"/>	
State Representative Pos. 1 Legislative District No. 16	
Vote for one	
<input type="checkbox"/>	Frances Chvatal (Prefers Democratic Party)
<input type="checkbox"/>	Mark Klicker (Prefers Republican Party)
<input type="checkbox"/>	
State Representative Pos. 2 Legislative District No. 16	
Vote for one	
<input type="checkbox"/>	Skyler Rude (Prefers Republican Party)
<input type="checkbox"/>	Carly Coburn (Prefers Democratic Party)
<input type="checkbox"/>	
County Partisan Office	
Columbia County Commissioner No. 2	
Vote for one	
<input type="checkbox"/>	Mike Talbott (Prefers Republican Party)
<input type="checkbox"/>	Marty Hall (Prefers Republican Party)
<input type="checkbox"/>	
Judicial Nonpartisan Office	
Judge Position No. 1 Asotin, Columbia, Garfield Superior Court	
Vote for one	
<input type="checkbox"/>	Brooke J. Burns
<input type="checkbox"/>	G. Scott Marinella
<input type="checkbox"/>	R. Victor Bottomly
<input type="checkbox"/>	
Precinct Committee Officer	
READ: For this office only: In order to vote for precinct committee officer, a partisan office, you must affirm that you are a Democrat or a Republican and may vote only for one candidate from the party you select. Your vote for a candidate affirms your affiliation with the same party as the candidate. This preference is private and will not be matched to your name or shared.	
Precinct Committee Officer - Republican	
Vote for one	
<input type="checkbox"/>	James Timothy Quade REP I affirm I am a Republican
<input type="checkbox"/>	Wilfred Eric Thorn REP I affirm I am a Republican