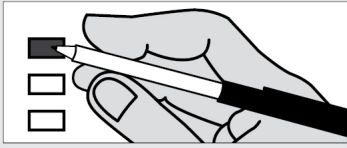


Instructions

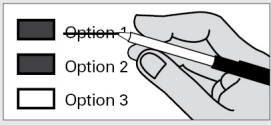
How to vote



Use a dark blue or black ink pen to completely fill in the box to the left of your choice.

Vote for one in each race. If you vote for more than one, no votes will be counted for that race.

If you make a mistake



Draw a line through the entire measure response or candidate's name.

Then you may make another choice.

Optional write-in



To vote for a candidate not listed for that race, fill in the box to the left of the dashed line and print the name of the candidate.



Who donates to campaigns?

View contributors for candidates and measures

Public Disclosure Commission

www.pdc.wa.gov  
Toll Free (877) 601-2828

READ: Each candidate for partisan office may state a political party that he or she prefers. A candidate's preference does not imply that the candidate is nominated or endorsed by the party, or that the party approves of or associates with that candidate.

Federal Partisan Office

U.S. Representative  
5th Congressional District

Vote for one

- Chris Armitage  
(Prefers Democratic Party)
- Brendan O'Regan  
(Prefers Independent Party)
- Stephen T. Major  
(Prefers Republican Party)
- Dave Wilson  
(Prefers Democratic Party)
- Cathy McMorris Rodgers  
(Prefers Republican Party)
- \_\_\_\_\_

State Partisan Office

Governor - Vote for one

- Alex Tsimerman  
(Prefers StandupAmerica Party)
- Phil Fortunato  
(Prefers Republican Party)
- Ryan Ryals  
(Prefers Unaffiliated Party)
- Leon Aaron Lawson  
(Prefers Trump Republican Party)
- Henry Clay Dennison  
(Prefers Socialist Workers Party)
- Tim Eyman  
(Prefers Republican Party)
- Liz Hallock  
(Prefers Green Party)
- Goodspaceguy  
(Prefers Trump Republican Party)
- Omari Tahir Garrett  
(Prefers Democratic Party)
- Don L. Rivers  
(Prefers Democratic Party)
- Martin L. 'Iceman' Wheeler  
(Prefers Republican Party)
- Raul Garcia  
(Prefers Republican Party)
- Tylor Grow  
(Prefers Republican Party)
- Winston Wilkes  
(Prefers Propertarianist Party)
- Brian R. Weed  
(States No Party Preference)
- Thor Amundson  
(Prefers Independent Party)
- Gene Hart  
(Prefers Democratic Party)
- William (Bill) Miller  
(Prefers American Patriot Party)
- Matthew Murray  
(Prefers Republican Party)
- Dylan B. Nails  
(Prefers Independent Party)
- Cameron M. Vessey  
(States No Party Preference)
- David W. Blomstrom  
(Prefers Fifth Republic Party)
- Anton Sakharov  
(Prefers Trump Republican Party)
- Craig Campbell  
(States No Party Preference)
- Nate Herzog  
(Prefers Pre2016 Republican Party)
- Cregan M. Newhouse  
(States No Party Preference)
- Ian Gonzales  
(Prefers Republican Party)
- Cairo D'Almeida  
(Prefers Democratic Party)
- Elaina J. Gonzalez  
(Prefers Independent Party)
- Jay Inslee  
(Prefers Democratic Party)
- Joshua Freed  
(Prefers Republican Party)
- David Voltz  
(Prefers Cascadia Labour Party)
- Joshua Wolf  
(Prefers New-Liberty Party)
- Loren Culp  
(Prefers Republican Party)
- Richard L. Carpenter  
(Prefers Republican Party)
- Bill Hirt  
(Prefers Republican Party)
- \_\_\_\_\_

32761

**State Partisan Office**

**Lt. Governor**

Vote for one

Joseph Brumbles  
(Prefers Republican Party)

Jared Frerichs  
(Prefers Libertarian Party)

Ann Davison Sattler  
(Prefers Republican Party)

James R. Rafferty  
(Prefers Democratic Party)

Marko Liias  
(Prefers Democratic Party)

Matt Seymour  
(Prefers Libertarian Party)

Michelle Jasmer  
(Prefers Democratic Party)

Bill Penor  
(Prefers Republican Party)

Richard (Dick) Muri  
(Prefers Republican Party)

Denny Heck  
(Prefers Democratic Party)

Marty McClendon  
(Prefers Republican Party)

---

**Secretary of State**

Vote for one

Ed Minger  
(Prefers Independent Party)

Gentry Lange  
(Prefers Progressive Party)

Kim Wyman  
(Prefers Republican Party)

Gael Tarleton  
(Prefers Democratic Party)

---

**State Treasurer**

Vote for one

Duane A. Davidson  
(Prefers Republican Party)

Mike Pellicciotti  
(Prefers Democratic Party)

---

**State Auditor**

Vote for one

Joshua Casey  
(Prefers Democratic Party)

Chris Leyba  
(Prefers Republican Party)

Pat (Patrice) McCarthy  
(Prefers Democratic Party)

**State Partisan Office**

**Attorney General**

Vote for one

Matt Larkin  
(Prefers Republican Party)

Mike Vaska  
(Prefers GOP Party)

Brett Rogers  
(Prefers Republican Party)

Bob Ferguson  
(Prefers Democratic Party)

---

**Commissioner of Public Lands**

Vote for one

Cameron Whitney  
(Prefers Republican Party)

Steve Sharon  
(Prefers Republican Party)

Hilary Franz  
(Prefers Democratic Party)

Kelsey Reyes  
(Prefers Libertarian Party)

Maryam Abasbarzy  
(Prefers Republican Party)

Sue Kuehl Pederson  
(Prefers Republican Party)

Frank Wallbrown  
(Prefers Democratic Party)

---

**State Nonpartisan Office**

**Superintendent of Public Instruction**

Vote for one

Ron Higgins

Maia Espinoza

Stan Lippmann

David Spring

Dennis Wick

Chris Reykdal

---

**State Partisan Office**

**Insurance Commissioner**

Vote for one

Anthony Welti  
(Prefers Libertarian Party)

Chirayu Avinash Patel  
(Prefers Republican Party)

Mike Kreidler  
(Prefers Democratic Party)

**State Partisan Office**

**State Senator  
Legislative District No. 16**

Vote for one

Perry Dozier  
(Prefers Republican Party)

Danielle Garbe Reser  
(Prefers Democratic Party)

William "Bill" Jenkin  
(Prefers Republican Party)

---

**State Representative Pos. 1  
Legislative District No. 16**

Vote for one

Frances Chvatal  
(Prefers Democratic Party)

Mark Klicker  
(Prefers Republican Party)

---

**State Representative Pos. 2  
Legislative District No. 16**

Vote for one

Skyler Rude  
(Prefers Republican Party)

Carly Coburn  
(Prefers Democratic Party)

---

**County Partisan Office**

**Columbia County Commissioner No. 2**

Vote for one

Mike Talbott  
(Prefers Republican Party)

Marty Hall  
(Prefers Republican Party)

---

**Judicial Nonpartisan Office**

**Judge Position No. 1  
Asotin, Columbia, Garfield Superior Court**

Vote for one

Brooke J. Burns

G. Scott Marinella

R. Victor Bottomly